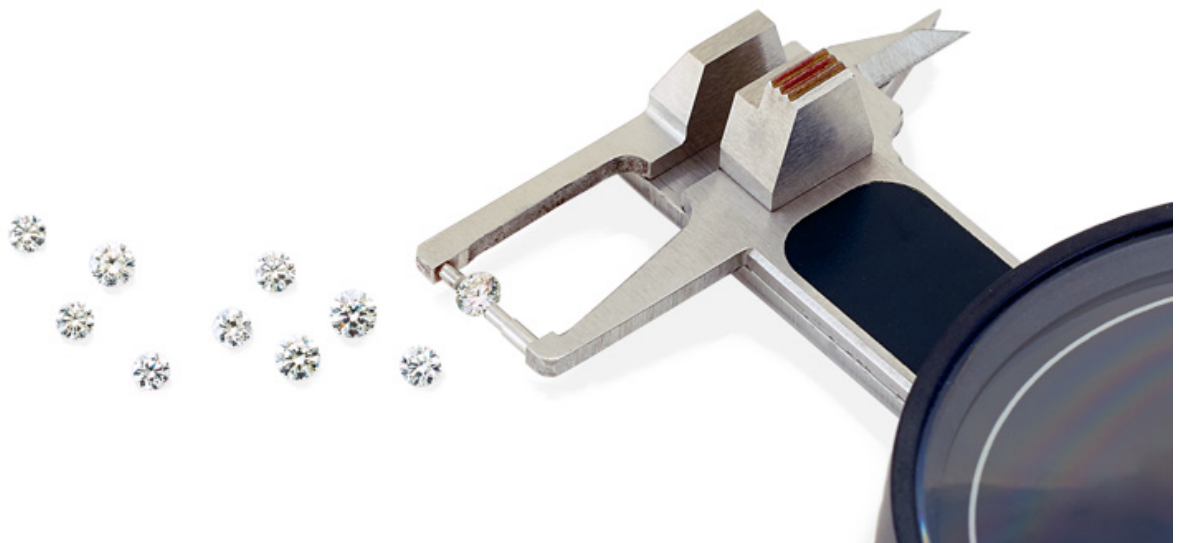


# Lab-Grown Diamonds: Knowing What You're Getting



All signs indicate that the lab-grown diamond's market share will continue to grow. This assortment lets you offer customers more options – with lab-grown, customers can choose a better color or larger diamond for the same price as a natural diamond. Lab-grown diamonds often give you a better margin, a novelty in diamonds.



## Unparallel Lines

Unfortunately, the influx of lab-grown diamonds to the market raises a dilemma. Thousands of undisclosed lab-grown diamonds (ULGDs) – particularly melee – find their way into the vast streams coming out of diamond hubs today. So how can you know for sure if the diamonds and diamond jewelry you order is natural or perhaps a ULGD?

# Choose Certainty

Stuller has a [Zero Tolerance Policy for ULGDs](#), so when you purchase from Stuller, you have absolute certainty and can share that trust and confidence with your customers. We screen every colorless and near-colorless loose diamond and piece of diamond jewelry that enters our manufacturing facility – no exceptions. Our approach to screening ULGDs uses the most sophisticated and effective technology in the industry, so you can rest assured that when you order a natural diamond, that's what you'll receive.

## Natural Round Melee Diamonds

We have a strategic service arrangement with GIA® (Gemological Institute of America), a separate entity from Stuller. The [independent Melee Analysis by GIA lab in Stuller's Lafayette facility](#) has GIA specialists who use proprietary technology to screen round melee diamonds in sizes of 0.005ct through 0.24ct – our best sellers! After screening, their technology sorts the stones based on color grade, the industry benchmark. When ordering GIA-screened melee, a customer will receive their diamonds in a gray parcel sealed with a GIA sticker along with an assurance card, for easy identification.



## Eye-Catching Blue

We store and ship LGDs in distinct blue packaging. Lab-Grown Diamonds will arrive at your door in a blue parcel. Lab-grown diamonds weighing 0.33ct and larger come with an assurance card notating the inscription on the girdle and that they have been screened by the Stuller Gemological Lab. If we are setting jewelry with LGDs, the diamonds travel from workstation to workstation in a blue work sleeve alerting all associates who work on the jewelry piece that there are lab-grown diamonds inside.

## Do We Stop There?

Not even close. As added security, we further require our suppliers to screen all diamonds for lab-grown diamonds. Random samples of diamonds from all our suppliers are also periodically sent out to leading laboratories to check for lab-grown diamonds. These protocols let Stuller extend

confidence and security to you, ensuring you get precisely what you purchase.

Stuller's strategic partnership with GIA helps us ensure that you're getting exactly what you order every single time. Our industry-leading processes help to ensure that we keep track of each stone we handle and that we are as fully transparent from the time of purchase through to delivery.